

1ST and 2ND Thessalonians

PREPARING FOR THE SECOND COMING

RECREATES: The Thessalonian
Model of Leadership

Delbert W. Baker, PhD

Friday, March 8, 2019



"So shall My word be that goes forth from My mouth; It shall not return to Me void, but it shall accomplish what I please, and it shall prosper *in the thing* for which I sent it." Isaiah 55:11 (NKJV)

THE POWER — OF — WORDS

A Georgia schoolteacher won \$10,000 from an insurance company for doing what dozens before her failed to do: She read the fine print.

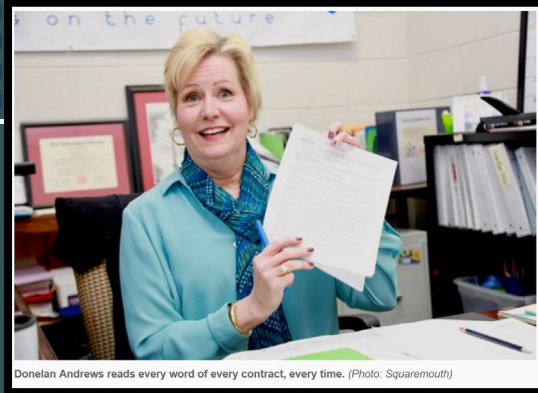
Donelan Andrews was seven pages deep into the fine print on a travel insurance contract when she spotted some curious text, according to Squaremouth, the Florida-based company that issues a policy known as Tin Leg.

"If you've read this far, then you are one of the very few Tin Leg customers to review all of their policy documentation," read the text, revealing a secret contest inviting Andrews to claim a \$10,000 reward.

Andrews was the first to reach out to Squaremouth about the contest, the company said, 23 hours after the event launched and after 73 policies spelling out the \$10,000 reward had been issued.

The company calls the contest Pays to Read, an effort to reward those who read policy documents from beginning to end. Andrews told Squaremouth she never skips fine print and that she tells students in her life skills classes to do the same.

<https://www.usatoday.com/story/news/nation/2019/03/07/woman-reads-fine-print-wins-10-000-insurance-company-contest/3091831002/>



Donelan Andrews reads every word of every contract, every time. (Photo: Squaremouth)

Preview

Pauls Letters *to the* **Thessalonians**

A Thessalonian Leadership Model

1. Context
2. Content
3. Conduct
4. Conversion

"A neglect to appreciate and improve the provisions of divine grace has deprived the church of many a blessing. How often would the Lord have prolonged the work of some faithful minister, had his labors been appreciated! But if the church permits the enemy of souls to pervert the understanding, so that they misrepresent and misinterpret the words and acts of the servant of Christ; if they allow themselves to stand in his way and hinder his usefulness, the Lord [418] sometimes removes from them the blessing which He gave."

Acts of the Apostles, page 418

1. Context



Thessalonica: seaport city,
Macedonia, Egnatian Way.

Largest city of Macedonia, ca.
200,000, free city, grossly immoral (1:9).
Had large Jewish population, had
synagogue (Acts 17:1).

1 Thess written by Paul from Corinth,
sent by Timothy, returned with good
news of their faith (Acts 18:1,5; 1
Thessalonians 3:1-8).

Penned in A.D. 52. Perhaps 1st letter –
and 1st book of NT

1 Thessalonians 1:2-10 (NKJV)

² We give thanks to God always for you all, making mention of you in our prayers, ³ remembering without ceasing your work of faith, labor of love, and patience of hope in our Lord Jesus Christ in the sight of our God and Father, ⁴ knowing, beloved brethren, your election by God.

⁵ For our gospel did not come to you in word only, but also in power, and in the Holy Spirit and in much assurance, as you know what kind of men we were among you for your sake.

⁶ And you became followers of us and of the Lord, having received the word in much affliction, with joy of the Holy Spirit, ⁷ so that you became examples to all in Macedonia and Achaia who believe.



Paul, Silas, Timothy came to Thessalonica after preaching in Philippi on 2nd Missionary journey (Act 16:1-3; 17:1-2).

Paul preached to Jews for three Sabbaths Jesus was Christ OT prophets (Acts 17:2-3). He stayed at least several months (Acts 17:3-4; 1Thes1:9), forced to leave due to persecution (Acts 2:2,14-16; 17:5-10).

He was anxious about them, and desired to return, but was hindered by Satan (2:17-20).



ITALY

ADRIATIC
SEA

MACEDONIA

Philippi

Thessalonica

Berea

Troas

AEGEAN
SEA

ASIA

IONIAN SEA

ACHAIA

Athens

Ephesus

Corinth

PELOPONNESE

MEDITERRANEAN SEA

Macedonia and Achaia

Copyright 2013, Ralph F. Wilson

CRETE

2. Content

Apostle Paul's Leadership Conduct

1 Thessalonians 2:1-13 (NKJV)

"For you yourselves know, brethren, that our coming to you was not in vain.

² But even after we had suffered before and were spitefully treated at Philippi, as you know, we were bold in our God to speak to you the gospel of God in much conflict. ³ For our exhortation *did* not *come* from error or uncleanness, nor *was it* in deceit.

⁴ "But as we have been approved by God to be entrusted with the gospel, even so we speak, not as pleasing men, but God who tests our hearts. ⁵ For neither at any time did we use flattering words, as you know, nor a cloak for covetousness—God *is* witness. ⁶ Nor did we seek glory from men, either from you or from others, when we might have made demands as apostles of Christ. ⁷ But we were gentle among you, just as a nursing *mother* cherishes her own children. ⁸ So, affectionately longing for you, we were well pleased to impart to you not only the gospel of God, but also our own lives, because you had become dear to us. ⁹ For you remember, brethren, our labor and toil; for laboring night and day, that we might not be a burden to any of you, we preached to you the gospel of God.

¹⁰ "You *are* witnesses, and God *also*, how devoutly and justly and blamelessly we behaved ourselves among you who believe; ¹¹ as you know how we exhorted, and comforted, and charged every one of you, as a father *does* his own children, ¹² that you would walk worthy of God who calls you into His own kingdom and glory.

¹³ "For this reason we also thank God without ceasing, because when you received the word of God which you heard from us, you welcomed *it* not *as* the word of men, but as it is in truth, the word of God, which also effectively works in you who believe."

3. Conduct, Leadership

R = Resilience

E = EI

C = Confident

R = Renaissance

E = Excelling

A = Agency

T = Tender

E = Enduring

S = Sacrifice

= RECREATES

Genuine Spiritual Leadership

"For you yourselves know, brethren, that our coming to you was not in vain, but after we had already suffered and been mistreated in Philippi, as you know, we had the boldness in our God to speak to you the gospel of God amid much opposition." (vs. 1-2)

R—Resilient Leader: capable of withstanding shock without permanent damage; ability to recover easily to misfortune or change.

- Paul viewed suffering in leadership as the platform for spiritual success, character building.
- Resilient leadership is positive, progressive and pacesetting—it doesn't give up or give in.
- It sees events from a providential perspective and is willing to boldly endure suffering and opposition for the sake of the Gospel mission.
- Resilience is the Gateway Trait to the others

RECREATES Authentic Leadership



R = Resilience

E = EI

C = Confident

R = Renaissance

E = Excelling

A = Agency

T = Tender

E = Enduring

S = Sacrifice

= RECREATES

Genuine Spiritual Leadership

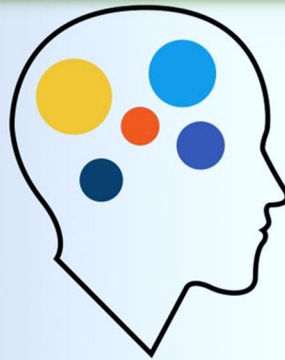
"For our exhortation does not come from error or impurity or by way of deceit. (v. 3)

"But speaking the truth in love, may grow up in all things into Him who is the head, Christ." Ephesians 4:15

E—Emotionally Intelligent Leader: understand, manage emotions of self and others by utilizing self-awareness, self-regulation, motivation, empathy and social skills.

- Leaders are self-aware, truthful, open, straight talking.
- Know and are sensitive to what the right thing is to do and not do—they practice what they preach.
- They avoid common politics that seek to hide, conceal or trick people or falsely spin and manipulate events and avoid tricks to "justify" measures as "necessary politics."
- Leaders speak truth—not ignorant or intentionally mistaken about critical issues, especially the gospel.

RECREATES Authentic Leadership



EMOTIONAL INTELLIGENCE



SELF AWARENESS



EMPATHY



MOTIVATION



SOCIAL SKILL



SELF MANAGEMENT

R = Resilience

E = EI

C = Confident

R = Renaissance

E = Excelling

A = Agency

T = Tender

E = Enduring

S = Sacrifice

= RECREATES

Genuine Spiritual Leadership

"Instead just as we have been approved by God to be entrusted with the gospel, so we speak, not as pleasing men but God, who examines our hearts." (v. 4)

C—Confident Leader: full of conviction and success of enterprise; having assurance and self-reliance, assured.

- Empowered and equipped with divine approval.
- Confident and convicted through the discovery of internal strength fueled by faith, gospel content, personal experience and Holy Spirit Partnership.
- Independence of man and dependence on God.
- Ability to stand alone for the right; self-sustained because of a pure, clean heart washed by the Word.
- Based in providence and convicted of purpose.

RECREATES Authentic Leadership



R = Resilience

E = EI

C = Confident

R = Renaissance

E = Excelling

A = Agency

T = Tender

E = Enduring

S = Sacrifice

= RECREATES

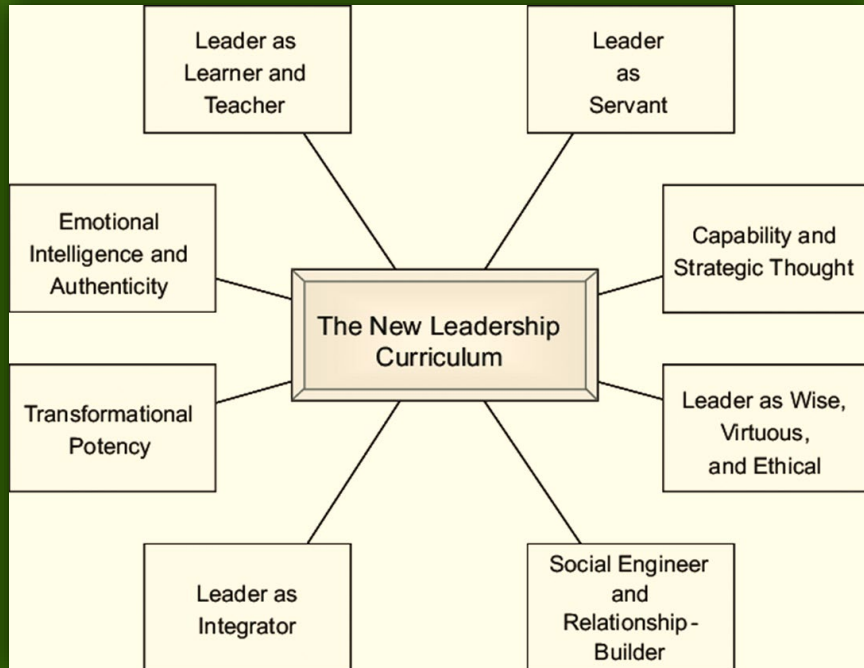
Genuine Spiritual Leadership

"For we never came with flattering speech, as you know, nor with a pretext for greed [i.e., greedy motives]." (v. 5, see *Christian Service*, p. 42; *Review and Herald*, Feb. 25, 1902)

R—Renaissance Leader: rebirth or revival of a of a genuine approach to leadership based on Bible principles and divine approval

- "A revival and a reformation must take place, under the ministration of the Holy Spirit.
- "Revival and reformation are two different things. Revival signifies a renewal of spiritual life, a quickening of the powers of mind, heart, a resurrection from spiritual death.
- "Reformation signifies a reorganization, a change in ideas and theories, habits and practices.
- "Reformation will not bring forth the good fruit of righteousness unless it is connected with the revival of the Spirit. Revival and reformation are to do their appointed work, and in doing this work they must blend."

RECREATES Authentic Leadership



R = Resilience

E = EI

C = Confident

R = Renaissance

E = Excelling

A = Agency

T = Tender

E = Enduring

S = Sacrifice

= RECREATES

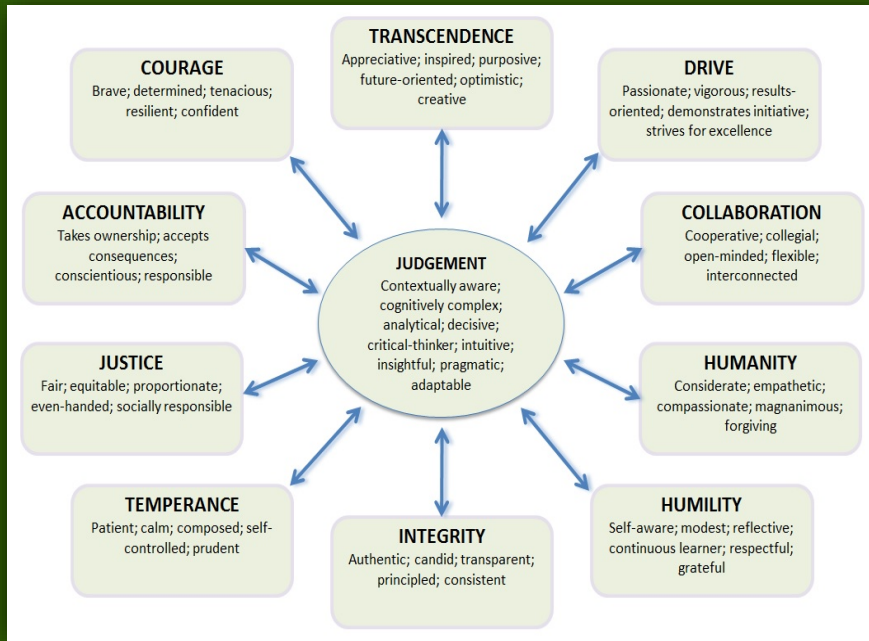
Genuine Spiritual Leadership

"God is witness—nor did we seek glory from men, either from you or from others."
(vs. 5-6)

E—Excelling Leader: initiated by a higher power to do more, they go beyond the average, norm and expected and hunger for God's glory.

- The secular model of leadership exalts power, politics, prestige, position and possessions (i.e., SNL>SSL>SAL).
- Thessalonian model of leadership as contrasts the secular with the spiritual emphasizing piety, peace, pleasantness, partnership and praise.
- The Excelling Leaders resists urge to exert authority; aim is to serve, build up others, not lord it over those whom they are leading (cf. Matthew 20:25-28).
- Primary means is to lead through spiritual influence.

RECREATES Authentic Leadership



R = Resilience

E = EI

C = Confident

R = Renaissance

E = Excelling

A = Agency

T = Tender

E = Enduring

S = Sacrifice

= RECREATES

Genuine Spiritual Leadership

"even though as apostles of Christ we might have asserted our authority." (v. 7)

A—Agency Leader: have a true sense of spiritual power apart from the five powers per French-Raven (1959)

- *Understand the five domains of power, i.e., Coercive, Reward, Legitimate, Referent, and Expert versus Spiritual.*
- *Power born not of greed, glory, gain but from knowledge, truth, expertise, experience and reliance on Jesus/gospel.*
- *They seek the approval of God versus the approval of man.*
- *This mindset frees from confines of social power and gives grace-filled power that can face anything in life or death.*
- *This is rare and magnificent power that propels forward.*

RECREATES Authentic Leadership



R = Resilience

E = EI

C = Confident

R = Renaissance

E = Excelling

A = Agency

T = Tender

E = Enduring

S = Sacrifice

= RECREATES

Genuine Spiritual Leadership

"But we proved to be gentle among you, as a nursing mother tenderly cares for her own children. Having thus a fond affection for you, we were well-pleased to impart to you not only the gospel of God but also our own lives, because you had become very dear to us." (vs. 7-8)

T—Tender Leader: beautiful combination of strength and love, peace and power, firmness and fairness

- Use of universal image of a loving nursing mother love.
- Gentle care and regard are used to fill out the dimensions of an emotionally balanced leader.
- The tender feminine model contrast the harsh, aloof and critical leader who builds self and tears down people.
- This Leader is gentle, winsome, emotionally intelligent, an encourager and builder of people; love their people and enjoy their friendship; powerful stark contrast.

RECREATION Athletic Leadership



R = Resilience

E = EI

C = Confident

R = Renaissance

E = Excelling

A = Agency

T = Tender

E = Enduring

S = Sacrifice

= RECREATES

Genuine Spiritual Leadership

"For you recall, brethren, our labor and hardship, how working night and day so as not to be a burden to any of you, we proclaimed to you the gospel of God." (v. 9)

E—Enduring Leader: a lasting style that withstands hardship, adversity and duration; is permanent with the test of truth, trials and time.

- *Challenges recall of exemplary manner the Apostle handled his calling, sufferings, trials; he did it for those who God loved and who he so loved.*
- *Note the tenacious indefatigability of his work ethic and commitment to the mission and mandate of the gospel.*
- *Motive was God, mission, people day and night—whatever the need, wherever the location, whenever the time.*
- *Such endurance points to a style of strength, forbearance, patience, stamina, persistence and even guardianship.*

RECREATES Authentic Leadership



R = Resilience

E = EI

C = Confident

R = Renaissance

E = Excelling

A = Agency

T = Tender

E = Enduring

S = Sacrifice

= RECREATES

Genuine Spiritual Leadership

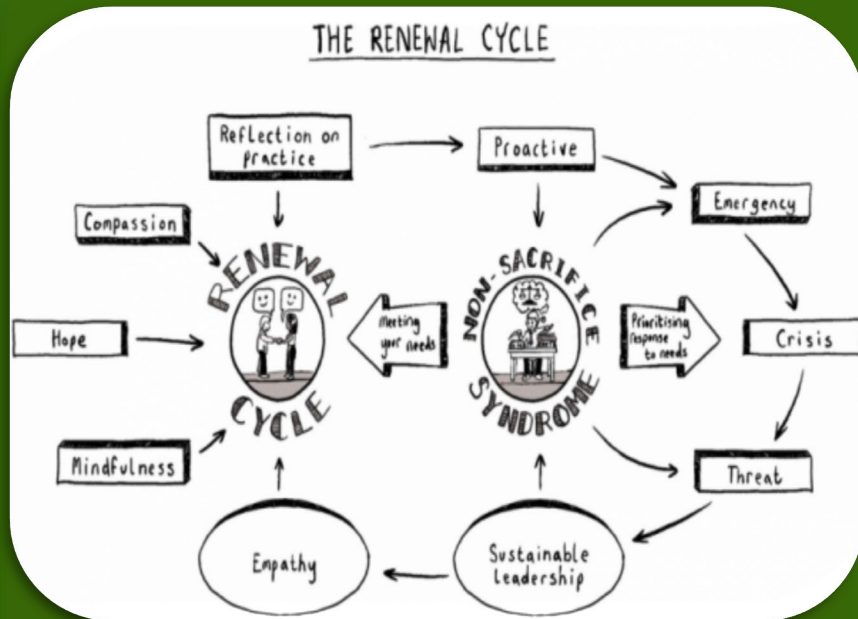
"You are witnesses, and so is God, how devoutly and uprightly and blamelessly we behaved toward you believers; just as you know how we were exhorting and encouraging and imploring each one of you as a father would his own children, so that you may walk in a manner worthy of the God who calls you into His own kingdom and glory." (vs. 10-12)

S—Sacrificing Leader: ultimate inclusive success trait of endless giving of time, talents, treasures for truth sake; no reservation.

- "There is the most imperative necessity of urging the injunction of Christ upon the minds and hearts of all believers, men and women, youth and children: "Search the Scriptures." Study your Bible as you have never studied it before.
- "Unless you arise to a higher, holier state in your religious life, you will not be ready for the appearing of our Lord.
- "As great light has been given, God expects corresponding zeal, faithfulness, and devotion on the part of His people.
- "There must be more spirituality, a deeper consecration to God, and a zeal in His work that has never yet been reached. Much time should be spent in prayer, that our garments of character may be washed and made white in the blood of the Lamb."

Testimonies, Vol. 5, p. 717

RECREATES Authentic Leadership



R = Resilience

E = EI

C = Confident

R = Renaissance

E = Excelling

A = Agency

T = Tender

E = Enduring

S = Sacrifice

= RECREATES

Genuine Spiritual Leadership

4. Conversion

Outcome of a RECREATES Leadership Life (1 Thessalonians 2:13)

Summary

“For this reason we also thank God without ceasing, because when you received the word of God which you heard from us, you welcomed *it* not *as* the word of men, but as it is in truth, the word of God, which also effectively works in you who believe.”

I consider my life worth nothing to me, if only I may finish
the race and complete the task the Lord Jesus has given to me
— the task of testifying to the gospel of God's grace.

- Acts 20:24 -



1. Focus

"...my life is worth nothing to me..."

2. Finish

...unless I use it for finishing the work assigned me
by the Lord Jesus...

3. Forward

...the work of telling others the Good News
about the wonderful grace of God."

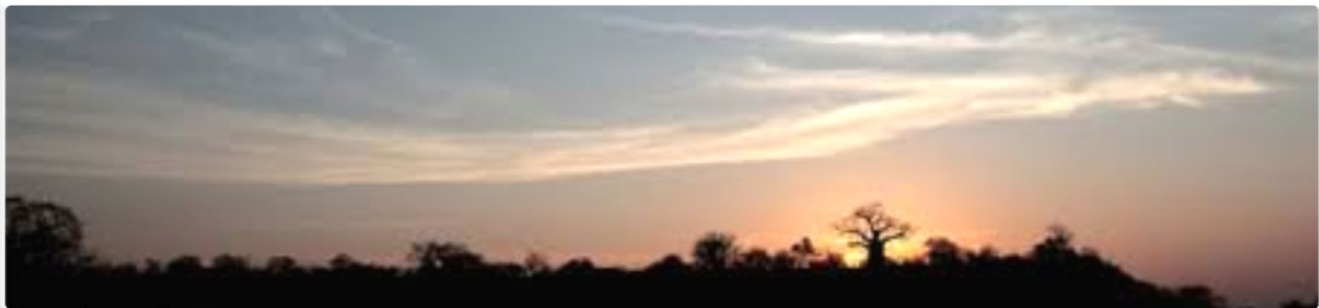
Acts 20:24 NLT

(How you complete the race is more important than how you begin.)
Keep the faith!

Outcome of a RECREATES Leadership Life (1 Thessalonians 2:13)

Summary

“For this reason we also thank God without ceasing, because when you received the word of God which you heard from us, you welcomed *it* not *as* the word of men, but as it is in truth, the word of God, which also effectively works in you who believe.”



Delbert W. Baker, PhD
Vice Chancellor
Adventist University of Africa
Nairobi, Kenya
www.aua.ac.ke
www.africansdahistory.org